

# Hats Off for Breast Health Silent Auction Catalog

## Hats #1 - 200

#1



Blue feathered, jeweled with veil and silver bow at back, cocktail hat, 1940s

#2



Black straw with pheasant feathers

#3



"Meier & Frank Co." woven straw with brown bird feathers 1950s  
(Betsy Johnson's mother's hat)

#4



Las Vegas showgirl head piece, "Doris Designed", 1940s.  
Given to Imie as a gift from friends

#5



Black feathered head piece with jewels on side

#6



Black felt, cup brim with pheasant feather accents



#7

“Beresford” blue-feathered headpiece from Shirley Kalkhoven’s Aunt Edith



#8

“Chandra by I. Magnin Co.” brushed felt, two-tone brown, small plume with inlaid feathers, veil and orange-ish ribbon trim; red-lace insert



#9

“Williams” brand black felt, top embellished with colorful feathers, wide red band with bow at back, 1940s



#10

Leather, layered with variegated feathers (union made #394080)



#11

“Ruth Henriette, San Francisco”, pheasant feathers, retailed for \$300 in 1950s



#12

Exotic pheasant feathered headpiece, accented with red and green feathers



#13 Red feathered head piece



#14 Multi-colored feathered headpiece



#15 Black mink with crushed velvet and silk bow  
Imie -- "I wore it during New York winters ..."



#16 Cream mink trim on brim of felt hat with veil and peach bow



#17 "Andre' Paris/New York", traditional white mink winter hat



#18 "Karen Design" black velvet with mink trim



#19 "Deborah", Autumn-haze mink



#20 Reproduction of Jean Paton, Paris; black caracul fur with mink tail trim



#21 "Mr. Henri" – Brown mink pill box



#22 "Clover Lane" (#729664) Brown mink with satin bows headpiece cocktail hat



#23 "San Diego Hat Co." WIDE brim, 24" olive green sun hat



#24 Red felt with black jersey, "Street Smart" scarf hat by Betmar



#25 "Commodore Litefelt" red bowler style



#26

“Merimac” felt hat with grosgrain black ribbon and black veil, matching hat pins



#27

Red velvet with red veil, grosgrain ribbon, jeweled embellishment by “Facho, Dallas”



#28

Red felt with red grosgrain ribbon “I. Magnin”



#29

“Noreen Fashions” Becky Johnson (Betsy Johnson’s mother) red felt with feathered embellishments, red bow



#30

“Lorie, 32<sup>nd</sup> St., New York” – Milan straw, modified pill box (Betsy’s mother)



#31

Green velour beret-style cap with heart and feather embellishment



#32

Green wool with brown grosgrain ribbon trim, modified pill box  
(Union Made #348606)



#33

Handmade "textured" velour with blossom-filled brim



#34

Chartreuse green feathered headpiece with black feather accents



#35

"Sally Victor – New York" forest green velour with special stitched field pattern



#36

Velvety velour cloche style with bow



#37

Brown velour beret made in France "I. Magnin" with veil,  
embroidered feathers, matching pins



#38

"Lilly Dache", New York, 78 East 56<sup>th</sup>" woven brown straw with green suede crown band



#39

"Betmar Hats" brown velour Luisant, high crown with brown silk ribbon band



#40

Brushed velour with quill feather accent



#41

Woven straw with wide, large brown taffeta bow, full-face brown veil and matching pin



#42

Brown felt with ear flaps, ribbon, jewel embellishment and bow  
"Glenover/Henry Pollack Co. New York"



#43

Wool felt with brown silk ribbon and bow, double veil in brown and black,  
"Chanda, I. Magnin"



#44

“Mr. John” tan wool felt with wide grosgrain ribbon, bow in back, tan veil with chenille embellishments



#45

Dark brown tam with brown grosgrain ribbon accent (union made #730664)



#46

“Mr. John” textured velour, matching hat pin, diamond weave veil



#47

Original Catalina, brown felt with brown veil and large brown bow



#48

Velour cloche with wide brim, grosgrain ribbon and bow in back (union made #804493)



#49

“Doree of New York” wool jersey fabric, top button, peach with white leather visor/brim



#50

“Lorie, 57<sup>th</sup> St., New York”; Taupe silk, pleated accents with veil, matching hat pins



#51 "Luci Puci"; Brushed velour with stitched grosgrain bow and feathers



#52 I. Magnin crocheted, fringe accent tassels, woven straw grass with hat pin



#53 "Mr. John" modified tam style, brown felt with hat pins



#54 100% wool, Henry Pollack Inc., New York dark brown with large side bow and veil



#55 Navy woven straw with velvet band, straw faux feather accent



#56 "Battlestein/Houston" black woven straw, velvet ribbon accent



#57 "Mr. John" woven straw, accent grosgrain ribbon, bakelite cherries, veil



#58 "I. Magnin" black pleated silk in snail pattern



#59 Navy woven straw with navy and white wide grosgrain ribbon

#60 (NO PHOTO) I. Magnin navy brushed velour



#61 Stitched straw with beading texture, grosgrain band and bow accent



#62 "Hattie Carnegie/I. Magnin" navy brushed felt with rose veil, grosgrain ribbon



#63 "Mr. John" black velvet



#64 "I. Magnin" black felt with black velour, multi-colored beaded accents



#65 "I. Magnin/Mallory" navy felt with silk red and white feather-like accent



#66 "I. Magnin" navy felt with felt bow



#67 "Miss Bierner" navy wool felt



#68 Black woven straw, patterned straw with matching hat pins



#69 "Leslie James/Bullocks" black velvet with black satin Wilshire ribbon, "ultimate pill box" ;

When discussing hats through the years, Imie commented, in regards to Princess Kate and her sister, "If any one can bring back hats, those girls can!"



#70 Black wool, cloche style with satin ribbon, bow, veil



#71 Black woven straw with grosgrain ribbon, back ribbon, hat pin



#72 "San Diego Hat Co." black & white woven straw with tafetta ribbon at back (one of the two hats used in the movie "Pretty Woman", worn by Julie Roberts in the scene at the polo match)



#73 "Coralie" black and white fedora style with grosgrain ribbon, black and white trim



#74 "Fredrick Nelson/Seattle" black woven straw sun hat w/mesh embellishments, velour ribbon



#75 "Brenda Waites Bolling" black and gray wool hat with gray wool trim, wool ribbon



#76 "Modern Miss – Made in Italy" black velvet pillbox with grosgrain ribbon, jet glass bead accent



#77 "Marian Marcia Exclusives" brushed wool with satin ribbon



#78 "Original Roberta Bernays" black silk taffetta, netting trim embellishment with ostrich feather



#79 Black woven straw with velvet ribbon crown and open straw top, short veil with large pearl and rhinestones



#80 "Park Lane Originals/Dallas" black wool felt with satin ribbon, rhinestone accent



#81 I. Magnin Importers black wool, veil, black ribbon and feather accents;  
2 matching hat pins



#82 "Glenover/Aldenaire Hat & Accessory" 100% Black wool "pirate" style with black  
veil, wool bow, black feathers, gold "flower"



#83 "Oleg Cassini" black woven straw, various sizes of grass/straw



#84 Copperish, tan woven straw, fedora style with veil top (union-made #441413)



#85 Dark navy woven straw, fedora-style with grosgrain ribbon with rose  
(union-made #956141)



#86 Peach/copper woven straw and netting cloche style hat with satin peach ribbon



#87 Black woven straw and ribbon with velvet ribbon band and bow, black veil



#88 Woven straw with grosgrain black ribbon, band and bow



#89 "Eva Mae Modes" navy woven straw sailor hat w/grosgrain ribbon, band & bow



#90 "Milbrae Exclusives" chocolate brown woven straw fedora with brown grosgrain ribbon



#91 Cream intricately woven straw with velvet bow



#92 "Betmar" navy woven straw cloche with cream linen ribbon



#93 "Ruth McCabe/1963 inscription" – White fur with sequins, velvet white ribbon (union-made #623987)



#94 "Junior Seasons New York" cream felt with black feather



#95 Cream veil with bow headpiece



#96 Cream woven chapeau, grosgrain ribbon



#97 I. Magnin white wool with grey veil



#98 I. Magnin cream linen



#99 "Hattie Carnegie/I. Magnin" white fabric snail roll brim with large button top



#100 "Jolyn Original" cream wool with black veil



#101 "Everitt" cream sweater fedora



#102 Cream veil hat with bows and feathers



#103 "Ruth McCabe/1958 inscription" – Cream stain with tafetta layers

(MEN'S HATS -- #104-115)



#104 "Chapeau Vimenet" made in Belgium (SSJ initials)/John Helmer tan fedora



#105 "Dorfman Pacific" dark grey wool



#106 "Casa Real – Rancagua" authentic Mexican Gaucho, black with braided cord band, black grosgrain ribbon



#106A "Casa Real – Rancagua" authentic Mexican Gaucho, grey with multi-colored braided band, grey & multi-color grosgrain ribbon



#107 "Brooks Bros" grey with black grosgrain ribbon



#108 "Bollman Designer Collection" tan safari with peach silk band



#109 "Hastings" (SSJ initials) grey-green brushed wool w/matching grosgrain ribbon

#110



“Royal Deluxe Stetson/John Helmer” grey with black grosgrain band

#111



“Neiman-Marcus/Churchill” brown brushed wool w/ black grosgrain ribbon and feather

#112



100% cotton captain's hat

#113



“Cavaunagh” (initials RWH) grey with silk black ribbon

#114



Made in Greece/Salavoutas Bros. blue-jean Greek captain's hat woven navy brim

#115



“Stetson 4x Beaver/The Open Road” light grey brushed fur  
(Larry Hagman/JR Ewing, “Dallas”)

#116

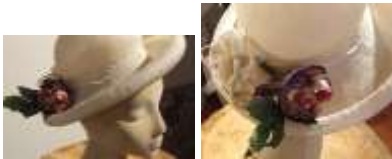


Bright yellow straw with flowered ribbon and purple silk flower

#117



“Noreen Fashion” vanilla mocha straw with varied textures, ultra suede band with fur ball detail



#118 "Miss Bierner/made in USA" cream woven linen with lace band, silk flowers – peony and rose, raffia twine bow and netting



#119 "Gymboree" woven straw, red crown with natural brim and blue bow at back



#120 Fedora straw with grosgrain ribbon and silk rose



#121 Traditional Asian or Chinese "coolie" hat, woven with rattan wood, intricate design



#122 Crocheted crown with woven wide straw brim



#123 Woven straw "crush" hat, texture and raffia ribbon band



#124 "Frank Olive/Frank's Girl New York" yellow straw w/wide yellow ribbon, flowers



#125 Woven straw with black ribbon brim



#126 Woven straw with indented crown

#127



“Von Lancelot” textured straw with elaborate decorative ribbon, silk flowers, feathers

#128



“Betmar/Plaza Suite” copper woven straw with peach veil, fur accents, silk ribbon

#129



“Gladdis Belle, 57<sup>th</sup> St. New York” simple straw hat with full-face veil and multi-pleated bows embellishment (Imie – “That’s serious veiling”)

#130



“Genuine Panama” tightly woven straw with olive velvet ribbon accent and small olive-colored veil

#131



Woven straw with olive green ribbon, variety of dried flowers and chiffon accents

#132



Simple woven straw hat  
(Imie – “That’s a hat for when you’re not trying to impress anyone)”)

#133



“Clifford & Willis” linen hat with blue silk scarf

#134



Small child’s hat or decorative – straw with purple silk ribbon and freesia-like silk flowers



#135 "I. Magnin" small, possibly child's hat of woven straw with long red grosgrain ribbon



#135A Fedora style woven straw with pleated silk ribbon band



#136 "Saks 5<sup>th</sup> Ave./Italy" gold mesh straw with flower pattern design



#137 Packable crocheted raffia



#138 Child's hat tightly woven linen straw with black velvet ribbon and bow



#139 "Hat Stuff" black woven straw, tightly woven brim, looser crown with raffia ribbon



#140 "Cathay/California" woven straw with matching grosgrain ribbon band



#141 Hot pink woven straw sun visor, crownless



#142 Woven crushable straw



#143 "Alice May/5<sup>th</sup> Ave., New York" dark brown woven linen with veil and brown silk ribbon



#144 Black woven straw, wide brim picture hat



#145 Pink woven straw with indented brim



#146 Bowler style red woven straw



#147 Red woven straw with red woven straw ribbon band



#148 Black woven straw with multi-colored brim



#149 Intricately woven black straw



#150 "Evelyn Varon Model" tightly woven red straw with red velvet ribbon



#151 "Hopelessly Romantic" blueish-grey tightly woven straw with gray silk ribbon and silk, painted pansy flowers

#152



“Mad Caps, made in Ecuador” closely woven black straw

#153



“Gene Doris” tightly woven cream straw with wide grosgrain ribbon, wide rolled brim

#154



“Youngs Portland, OR, NY Creation” Tightly woven copper straw, no crown, black veil, wide black grosgrain ribbon and bow

#155



“Babbitt Brothers” wedding party hat, linen woven netting, chiffon overlay, velvet blue bow

#156



Red woven straw with red woven ribbon

#157



Glossy black woven straw of various sizes/textures, black grosgrain ribbon

#158



“Hat Stuff” red woven straw, beaded woven straw ribbon

#159



Small black woven straw with small brim and black grosgrain ribbon

#159A



“Lucylle Smith Gilbert/American Creation” black tightly woven straw, crownless with pleated, long black silk chiffon ribbon

#160



“Betmar” coffee colored wool with large feathered accent

#161



“Betmar” wool, Robin Hood-style, indented crown

#162



“Maison Brunshwig – Zurich, made in Switzerland” wool bowler style

#163



“Don Anderson/Lancaster” gray wool, gray veil, gray ribbon, assorted feathers

#164



“Georgie” brushed velour wool, brown veil, thin peach grosgrain ribbon with ribbon accent

#165



Crushed velour, stylized “Flying Nunn” with large blue grosgrain ribbon

#166



“Laura Ashley/made in Great Britain” wool purple bowler with dark blue velvet ribbon



#167 "Modesa/Made in France" red wool bowler with red grosgrain ribbon



#168 Wool crushed cloche with pearl tipped accent



#169 "Mr Fields" blue wool with wide grosgrain ribbon



#170 Maroon 100% wool bowler, doeskin felt, black grosgrain ribbon w/feather accent



#171 "Dorfman Pacific/Stockton, California" red cowgirl style with beautiful feathered band and medallion



#171A Maroon wool felt "Lancaster", with wine grosgrain ribbon, bow at back, indented crown with black feathers and black button



#172 Black bowler style wool with black grosgrain ribbon and pink/purple flowers



#173 "Michael Howard, Jacqueline Farrar" purple 100% wool w/large purple ribbon



#174 "Adolfo/New York, Paris" dark navy wool with matching grosgrain ribbon



#175 "San Diego Hat Co." pink wool with elaborate pink wool accent



#176 "Scala" red wool with chiffon ribbon and large silk roses



#177 Purple wool with lots of purple veiling



#178 Modified cloche imported fur velour with taupe silk pleated band



#179 "Edward Mann/England" classic navy blue bowler with matching ribbon



#180 "Liz Claiborne" teal wool with gray veil and gray grosgrain ribbon



#181 "Victorian Addiction" copy of Victorian era hat – Wine velour with elaborate brim decorations



#182 Wine wool with velvet ribbon, black petal accent



#183 "Amanda Smith" red wool fedora style with pink ostrich feather & key-chain accent



#184 Loosely woven fine straw with woven straw band and bow



#185 Large brimmed straw hat with white scarf band and tie



#186 Woven tweed-like straw, lace insert with silk flowers



#187 Large brimmed straw hat with wide grosgrain ribbon



#188 "Importina" woven straw with silk ribbon and silk pink carnations



#189 Small child's straw hat with tan grosgrain ribbon and dried flowers



#190 Straw with cream linen scarf tie

#191



Woven straw with raffia ribbon band and dried flowers

#192



“Talbots” woven fine straw linen with large silk yellow rose

#193



Woven straw with brown grosgrain ribbon and dried flowers, wheat, grasses

#194



“Liz Claiborne” light straw with raffia twisted band

#195



Heavy woven straw with lace-trimmed blue polka dot ribbon and bow

#196



“Sea-Gull Brand – Made in Peoples Republic of China; woven straw sun hat, wide brim, purple silk rose

#197



Tightly woven heavy straw with tie-strip, cowboy-style sun hat

#198



Straw bowler

#199



“Saks 5<sup>th</sup> Ave. – Made in Italy” loosely woven straw fedora with raffia band



#200

Tightly woven bowler straw with grosgrain ribbon band, silk flowers & feathers